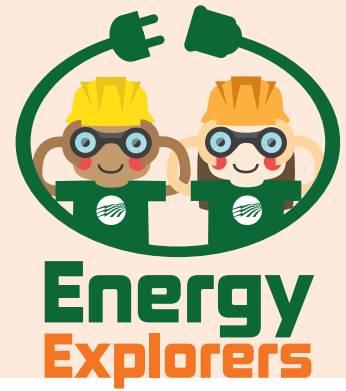


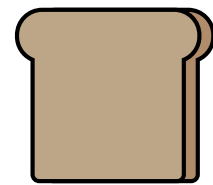
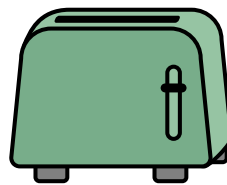
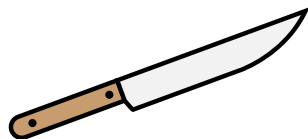
ELECTRICAL HAZARD ACTIVITY



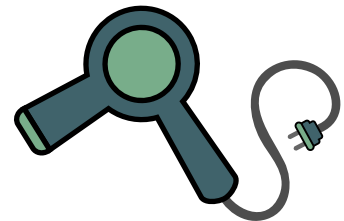
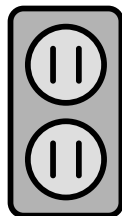
The Energy Explorers want to remind you to always practice electrical safety! Remember, electricity can be dangerous, so make sure to avoid electrical hazards.

DIRECTIONS: Circle the item that doesn't belong. **HINT:** If all three items in the row were combined, which would make the situation an electrical hazard?

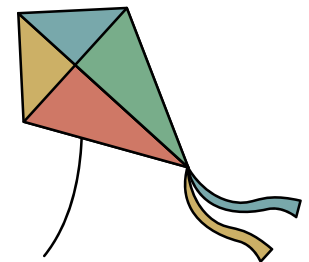
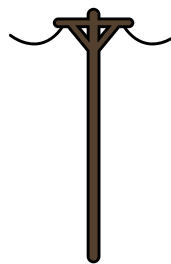
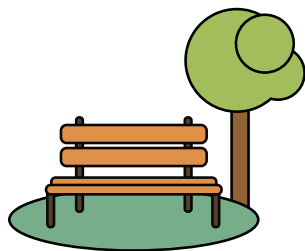
1



2



3



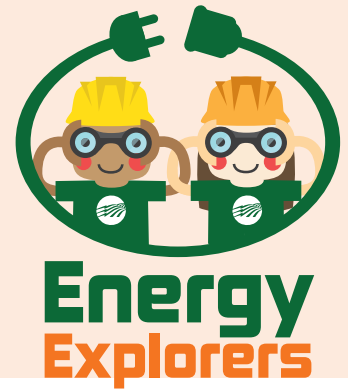
Answer Key

1. KNIFE

2. SINK

3. POWER LINES

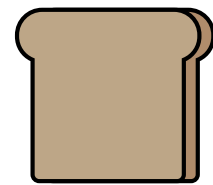
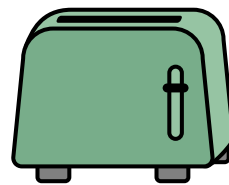
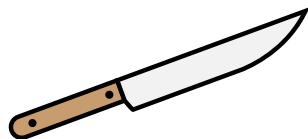
ELECTRICAL HAZARD ACTIVITY



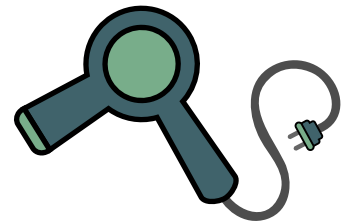
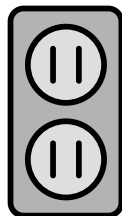
The Energy Explorers want to remind you to always practice electrical safety! Remember, electricity can be dangerous, so make sure to avoid electrical hazards.

DIRECTIONS: Circle the item that doesn't belong. **HINT:** If all three items in the row were combined, which would make the situation an electrical hazard?

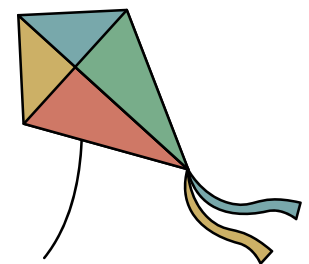
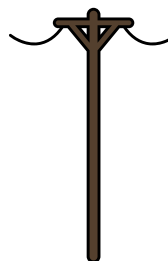
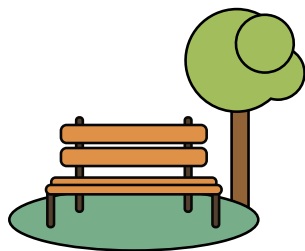
1



2



3



Answer Key

1. KNIFE

2. SINK

3. POWER LINES